



ALARM SYSTEMS



Peace of Mind

Agri-Alert is a complete alarm system for monitoring temperature, power, feed and watering systems, burglary, bio-security and more. The Agri-Alert alarm system constantly monitors your operation and quickly notifies you upon the detection of common site problems or failures.



AGRI-ALERT™ 800Eze

- Graphical LCD screen
 - View information quickly & clearly
 - Intuitive screen design
 - Easy navigation through menus
- Monitor up to 8 zones
- Acknowledge alarms by phone
- Call in from off site for zone temperature and system status report



WIRELESS MODULES

- Designed to operate with the AA-800Eze
- Open air unobstructed range of up to 3000 feet
- Simple one-way communication between receivers and transmitters
- Easy to install and program



AGRI-ALERT™ 128 TOUCH

- 7-inch color touch screen allows all zones to be seen at once
- Internet connectivity provides remote access, eliminating your need to go to a location every time it notifies you
- Email and SMS notifications
- Modular architecture allows you to design a system that's the right size for your operation
- 128 zones let you monitor a large site with a single system
- Phone dialer provides dependable delivery of alarm notification even if you don't have internet
- Built-in security makes sure only authorized users can adjust the system
- Fully compatible AA9600 replacement

COMMON TO ALL ALARMS

- Spike Block surge/lightning protection on all zone inputs and system outputs
- Outdoor temperature compensation feature available on all models
- Reliable rechargeable battery back-up
- Programmable alarm recall feature for acknowledged but unresolved alarms
- Self-diagnostics of complete system including wiring, sensors, outputs, fuses, battery and more
- Independent output for a local siren or revolving light
- Non-volatile memory for all programmed parameters
- Security with up to 10 programmable user access codes
- Alarm memory log with time, user & date stamp
- Dialing of alarms to multiple phone numbers
- Built-in phone line seizure for added security
- Share phone line with other devices, no second line required
- Off-site phone-in capabilities for checking temperatures and other system functions
- Moisture and dust-tight ABS enclosures for harsh environment locations
- All zones can be bypassed individually or in groupings
- Any zone can be configured for dry contact, temperature or burglary. AA 128 Touch zones can also be configured for 4-20 mA and 0-5V

Dialing of alarms to multiple phone numbers and off-site phone-in capabilities for checking temperatures and other system functions



AgriAlert™



AA 800EZE



AA 128 TOUCH

Number of zones available	8	128
Programmable zone types	temperature, dry contact / ELR, burglary	temperature, dry contact, burglary, 4-20 mA, outdoor probe, 0-5 volt
Zone partitioning (grouping)	8	16
Temperature sensor calibration	yes	yes
Number of contacts system can call	8	12
Number of call sequences per alarm	up to 7	no limit
Acknowledge alarm by phone	yes	yes
Alarm restored call-back feature	yes	yes
Call in for temperature / status reports	yes	yes
Programmable recognition time per zone	yes	yes
Programmable start call delay	yes	yes
Programmable alarm recall feature	yes	yes
Outside temp compensation feature	yes	yes
Independent users	up to 10	up to 102
Auxiliary 28 volt / 12 volt DC power output	no / yes	yes / yes
Siren output	yes	yes
Output relays (programmable)	yes	yes
Individual zone labeling (on screen)	no	yes
Individual zone voice identification	yes	yes
Individual zone status identification	yes	yes
Remote modules	no	yes
Wireless compatible	no	yes
Rechargeable battery	yes	yes
Display	1" x 2" LCD screen	7" color touch screen
Event buffer (non-volatile)	yes	yes
Alarm memory log	yes	yes
Temperature SP can be set to a curve	no	yes
Telephone line monitoring	yes	yes
Phone line seizure	yes	yes
Bypass zones remotely	yes	yes
Program & Back-up w/ PC	yes	yes
System self diagnostics feature (system trouble)	battery, AC supply, siren, fuses & probes	battery, AC supply, siren, probes & dialer, SBI
Multi language	no	yes
Automatic software update when connected to the internet	no	yes
Ethernet connections	no	yes

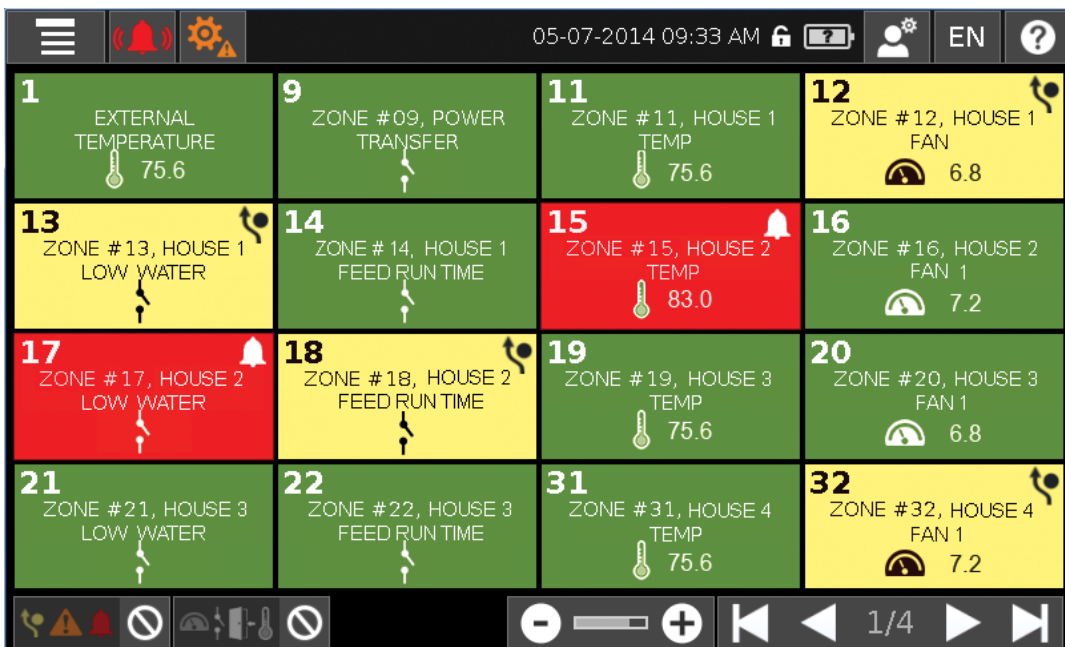
Specifications subject to change without notice.

Agri-Alert 128 Touch is the latest addition to Cumberland’s long history of providing poultry producers with peace of mind through our line of proven and dependable alarm systems. Equipped with all of the same great features that made previous Agri-Alert models so reliable, the AA 128 Touch offers so much more.

FLEXIBLE ZONE VIEWING



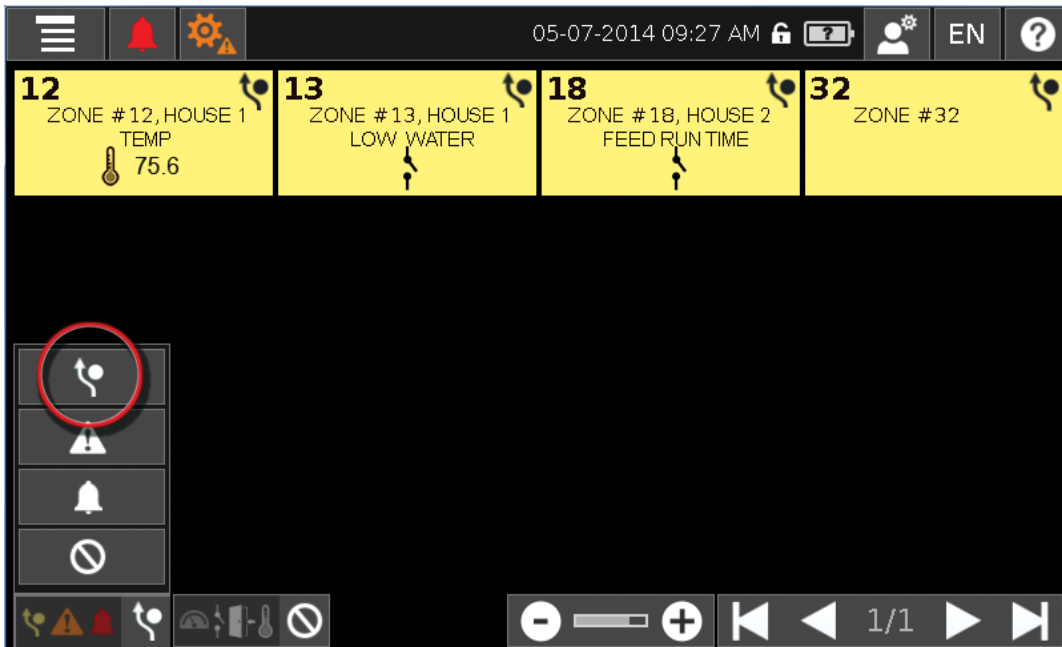
Display all 128 zones in a single screen view, allowing for easy scanning of active alarms throughout the entire system.







With one-touch zoom-in, zoom-out capabilities, you can quickly zero in on a specific group of zones, increasing the tile size and information visible for each zone.

AGRI-ALERT™ ALARM SYSTEMS

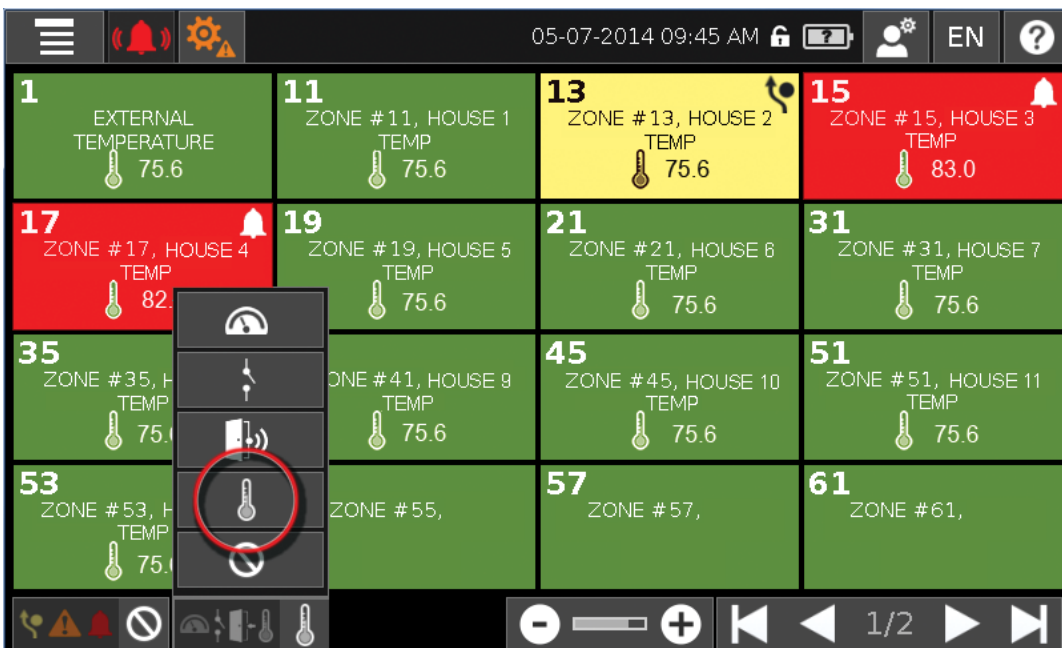
ADVANCED ZONE FILTERING OPTIONS








Filtering zones by their current status allows you to easily view zones that may need immediate attention.

-  Bypass Mode
-  Trouble
-  Active Alarm
-  Clear Filter

By selecting the Bypass Mode icon you have isolated any zone that has currently been set on bypass.



Filtering zones by their type allows you to quickly view all zones of a specific function.

-  AC Current
-  Dry Contact
-  Intrusion
-  Temperature
-  Clear Filter

By selecting the Temperature icon, you have isolated all zones associated with temperature and can view them at once.

EASILY ACCESSIBLE ZONE SETTINGS

05-07-2014 09:39 AM

78.3°F
110.0°F
27.3°F

Zone 11
ZONE # 11, HOUSE 1, Temp

General Limits History

Name	Partition	Date	Min	Max	
ZONE #11, Temp	None	05-08-2014	78.3°F 5:37am	85.5°F 3:25pm	1/1
		05-09-2014	78.3°F 5:37am	85.5°F 3:25pm	
		05-10-2014	78.3°F 5:37am	85.5°F 3:25pm	
		05-11-2014	78.3°F 5:37am	85.5°F 3:25pm	

24h ↑ 78.3°F 06:26 pm
24h ↓ 78.3°F 06:26 pm

Bypass

With one-touch, view historical information and records for each individual zone.

05-08-2014 08:53 AM

78.3°F
110.0°F
27.3°F

Zone 11
ZONE # 11, HOUSE 1, Temp

General Limits Action Mess. Calibration

Curve

External temperature compensation

110.0°F

27.3°F

Within each individual zone, click the pencil icon to easily adjust values and limits, such as your high and low temperature set points.

Expanding To Your Needs

As your operation grows, Agri-Alert can be expanded to accommodate your needs. KP, TP and TR expansion modules connect to AA 128 Touch alarm system by way of a RS-485 communication system (4 wires or wireless connection available) to give you unmatched flexibility and adaptability.



KP-8IN-1REL



TP-8IN-1REL



TR-2IN-1REL

EXPANSION MODULES KP, TP & TR

- Expansion modules can be “daisy chain connected” up to 4,000 ft away from master AA 128 Touch control
- Expansion modules come with one programmable output
- KP’s allow user to view and modify system parameters from remote locations
- All devices come in a PVC water and dust proof enclosure
- All devices come with the Spike Block surge/lightning protection on inputs and outputs

Module Hardware Features

PRODUCT NAME	CONFIGURABLE INPUT	RELAY OUTPUT WITH CURRENT READING (5A)	OLED DISPLAY	RFID READER	KEYPAD
KP-8IN-1REL	8	1	1	1	1
TP-8IN-1REL	8	1	1		
TR-2IN-1REL	2	1		1	

Note: The maximum voltage on the relay outputs is 240Vac. The maximum current allowed is 5A. The minimum permissible load on the relay outputs is 0.1A. See manual for details on relay output loading.

Innovative and flexible solutions designed to help protect your investment, reduce downtime and save you money



AGRI-ALERT POWER SUPPLY*

- 20 watt (100-240 voltage supply)
- Up to 4 modules
- Plastic enclosure
- Compatible with legacy modules

*Battery backup not included



RFID SECURITY TAGS

The KP-8IN-1REL and TR-2IN-1REL modules are equipped with an RFID tag reader. This means that every time a tag is scanned, it keeps track of the scan and sends information to the Main Controller. In addition, when you activate the output through a scan, the relay is energized for the predetermined period of time. Even if the module is disconnected from the Main Controller, it will be able to scan, record and activate the output. To ensure compatibility with system, use the tags provided with the module.



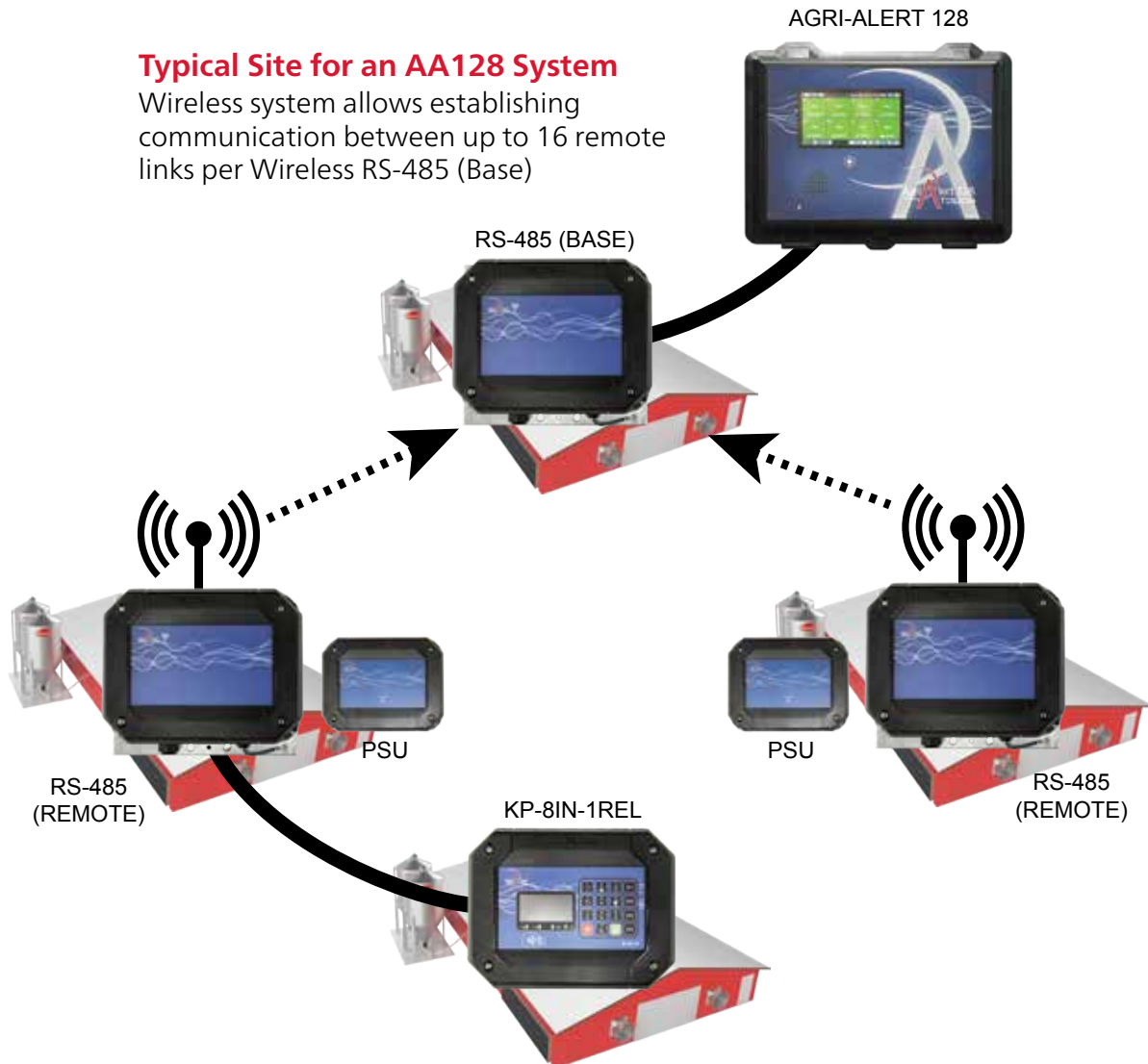
Wireless Options

Go wireless with Cumberland's RS-485 modules. This module can be programmed as a receiver or transmitter with a range of up to 6,500 feet*. This wireless module is typically used in combination with a main controller (AA128 Touch). A secondary wireless RS-485 transmitter can be utilized to relay information from remote RS-485 modules to the wireless RS-485 (Base). This allows a variety of configuration options to accommodate your particular needs.

* Range of 1.2 miles (2 kilometers) open air unobstructed view.



Wireless RS-485 Module



Note: Obstacles such as buildings, trees, hills, etc. will reduce the range.

PROVEN & DEPENDABLE™

In today's competitive market place, it is essential to maximize the efficiency and performance of your poultry production facilities. Cumberland is the industry leader in the manufacture of proven and dependable poultry production equipment designed to help you meet these goals.



Optional Equipment

Optional equipment may vary by country so please consult with your Cumberland dealer for details.



Water Meter



Heat Detector



Microphone



Door Alarm Contacts



Driveway Photo Beams



Motion Detectors



Temperature Sensor



Low Water Pressure Sensor



Power Failure Kit



Sirens 15 & 20 watt



Temperature Sensor



AGCO
Your Agriculture Company

Proven & Dependable™

Cumberland is a part of GSI, a worldwide brand of AGCO
 P.O. Box 20; 1004 E. Illinois Street; Assumption, IL. 62510 USA; Ph: 217/226-4401; USA Fax: 800/353-8491; Int'l Fax: 217/226-4420
 E-Mail: cumberland@cumberlandpoultry.com; Website: www.cumberlandpoultry.com

C-65 1/17 | Copyright © 2017 by AGCO Corporation | Printed in USA | Due to continual improvements, Cumberland reserves the right to change designs and specifications without notice.