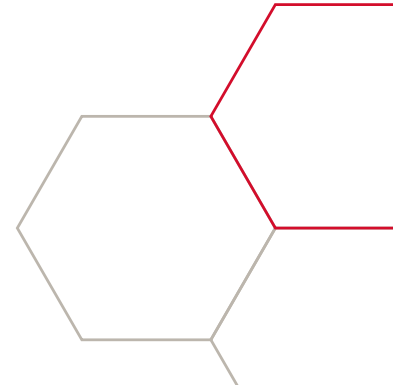




SCOUT

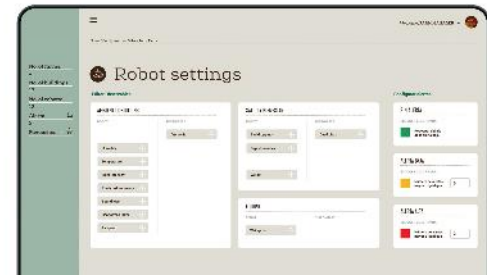
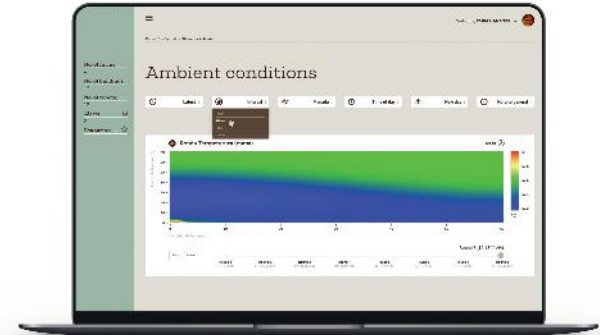
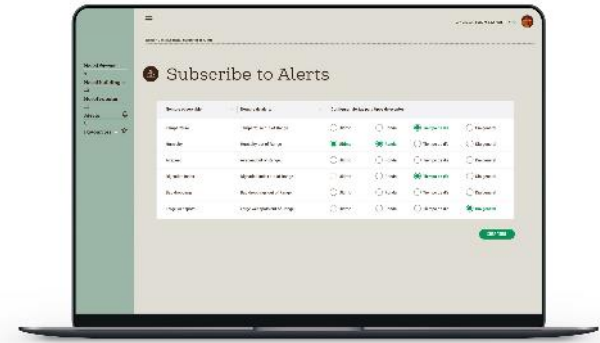
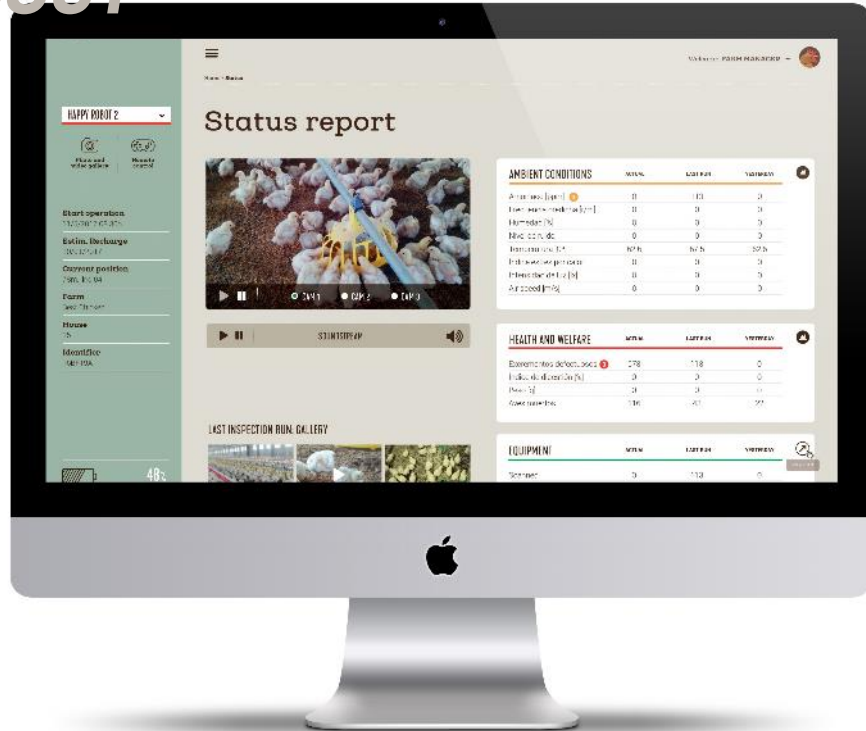
BETTER WELFARE. MORE PRODUCTIVITY.

STAY INFORMED NO MATTER WHERE YOU ARE.
DAY AND NIGHT.



AN OUTSTANDING SOFTWARE PLATFORM WITH MANAGEMENT BY EXCEPTIONS AND ALERTS

SCOUT

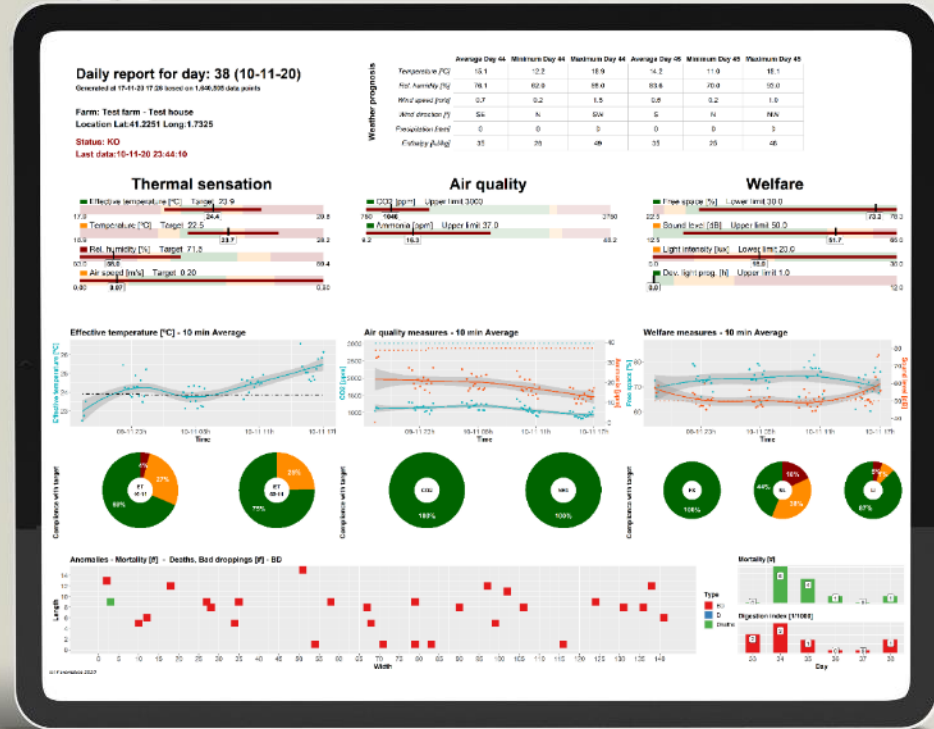


FROM DATA TO ACTION

MORNING REPORTS FOR FARMERS

PRODUCTION REVIEW FOR CONTINUOUS IMPROVEMENT

WEEKLY REPORTS CYCLE REVIEWS



Daily report for day: 38 (10-11-20)

Generated at 17-11-20 17:26 based on 1,640,505 data points

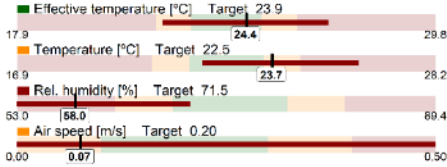
Farm: Test farm - Test house
Location Lat:41.2251 Long:1.7325

Status: KO
Last data:10-11-20 23:44:10

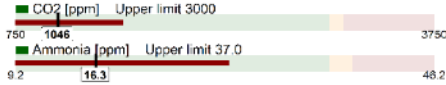
Weather prognosis

	Average Day 44	Minimum Day 44	Maximum Day 44	Average Day 45	Minimum Day 45	Maximum Day 45
Temperature [°C]	15.1	12.2	18.9	14.2	11.0	18.1
Rel. humidity [%]	76.1	62.0	88.0	83.6	70.0	93.0
Wind speed [m/s]	0.7	0.2	1.5	0.6	0.2	1.0
Wind direction [°]	SE	N	SW	S	N	NW
Precipitation [mm]	0	0	0	0	0	0
Enthalpy [kJ/kg]	35	26	49	35	25	48

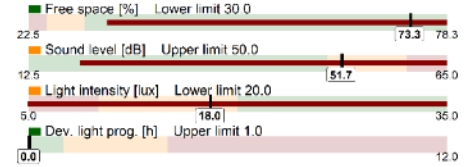
Thermal sensation



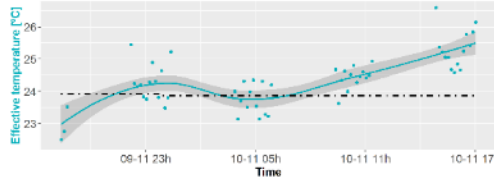
Air quality



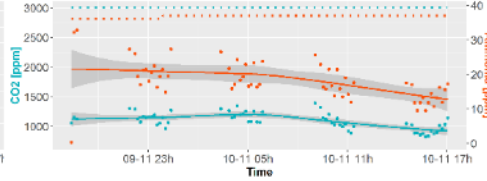
Welfare



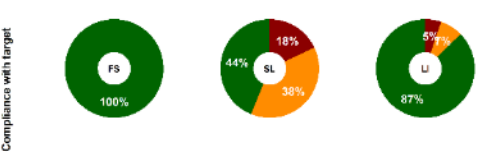
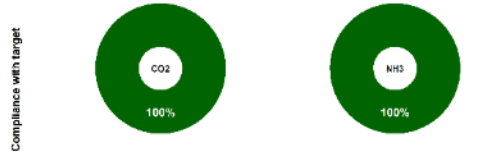
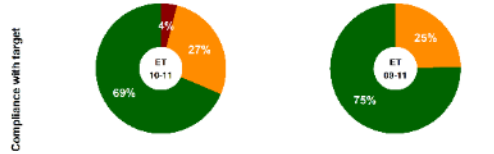
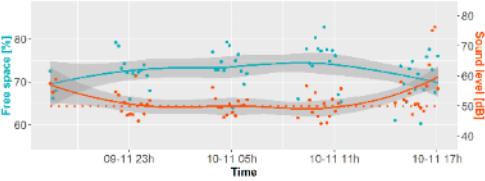
Effective temperature [°C] - 10 min Average



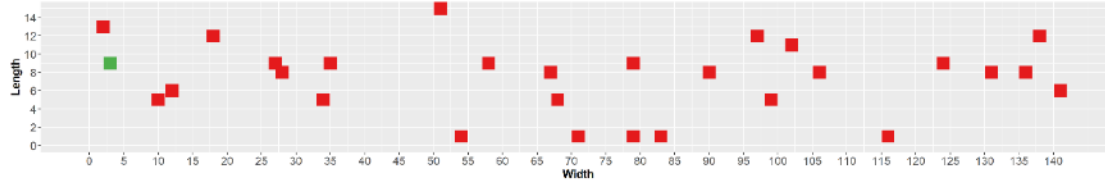
Air quality measures - 10 min Average



Welfare measures - 10 min Average



Anomalies - Mortality [#] - Deaths, Bad droppings [#] - BD



Mortality [#]

